

Barometers

Analogue

Analogue Barometer/Weather station

Indoor use. Bench or wall-mounting, with three, 45mm diameter dials. From top to bottom these indicate humidity (scaled 0 to 100% RH), atmospheric pressure (scaled 970 to 1050hPa x 1hPa) and temperature (scaled -20 to +60°C), respectively. Overall 55 x 33 x 165mm W x D x H. Weight 130g.

BF105-40 Analogue barometer/
weather station

Analogue Barometer/Weather station

Outdoor use. Wall-mounting, aluminium/glass housing with rain shield. 3-dial white face with main dial indicating atmospheric pressure from 960 to 1040hPa x 1hPa and smaller subsidiary dials indicating temperature from -40 to +60°C x 1°C and humidity from 0 to 100%RH x 1%RH, respectively. Overall 145 x 70 x 215mm W x D x H. Weight 500g.

BF105-60 Analogue barometer/
weather station

Hygrometers – see *HY160 to HY650-series*.

NOTE

Atmospheric pressure is now commonly measured in the metric unit of hPa (hectoPascals). 1hPa = 1mb.



BF105-40

Aneroid

Aneroid Barometer

Dual scaled 940 to 1060hPa x 1hPa and 71 to 80cm x 0.1cm. Brass finish case 100mm diameter. With manually adjustable pointer, to aid pressure trend indication, and hanging ring.

BF108-15 960 to 1060hPa

Cup Anemometer

A portable hand-held instrument providing a direct reading of wind speed in four different units. With plastic outer case and cups and engraved scales. Ranges 0 to 120km/h, 0 to 35 m/s, 0 to 12 Beaufort, 0 to 60 kt.

AN450-10 Anemometer

Anemometer, vane

Portable, hand-held vane-type anemometer and thermometer for outdoor applications.

Ranges:-

Wind speed: 0.2 to 30m/s (alternative ranges: Beaufort scale, knots, km/h)

Temperature: -30 to +60°C (alternative range: -22 to +140°F)

Other functions include maximum and average wind speed, and Windchill temperature calculation. Overall 98 x 39 x 17mm L x W x D. Weight 110g. In splash-resistant case and supplied with soft carrying case, lanyard and batteries.

AN450-40 Vane anemometer

BL590-25 Spare battery, 3V



BF107-40

Digital

Digital Barometer/Weather station

With 5 line LCD display indicating temperature (indoor, and outdoor using radio communication sensor supplied) with Max/Min facility, indoor humidity, barometric pressure with graphic icon indication of next 24 hours weather, pressure development profile for the previous 48 hours shown in a bar chart format, storm warning indicator, clock with time zone adjustment, date, month and year calendar. Wall or desk mounting. Overall 180 x 100 x 35mm H x W x D (display unit), 160 x 43 x 28mm (remote sensor). Supplied with batteries.

◆ Ranges

- 970 to 1030hPa x 0.1hPa
- -40 to +60°C (-40 to +140°F) outdoor
- -10 to +60°C (+14 to +140°F) indoor
- 1 to 99%RH

BF107-40 Digital Barometer/
Weather station

Accessories

BL610-08 Battery, AAA, 1.5V
(2 required for sensor)

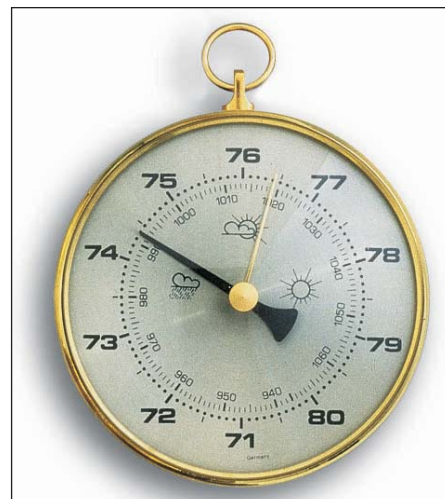
BL610-15 Battery, AA, 1.5V
(3 required for display module)



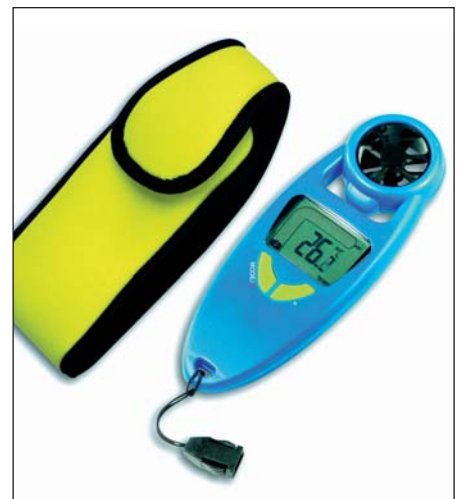
AN450-10



BF105-60



BF108-15



AN450-40